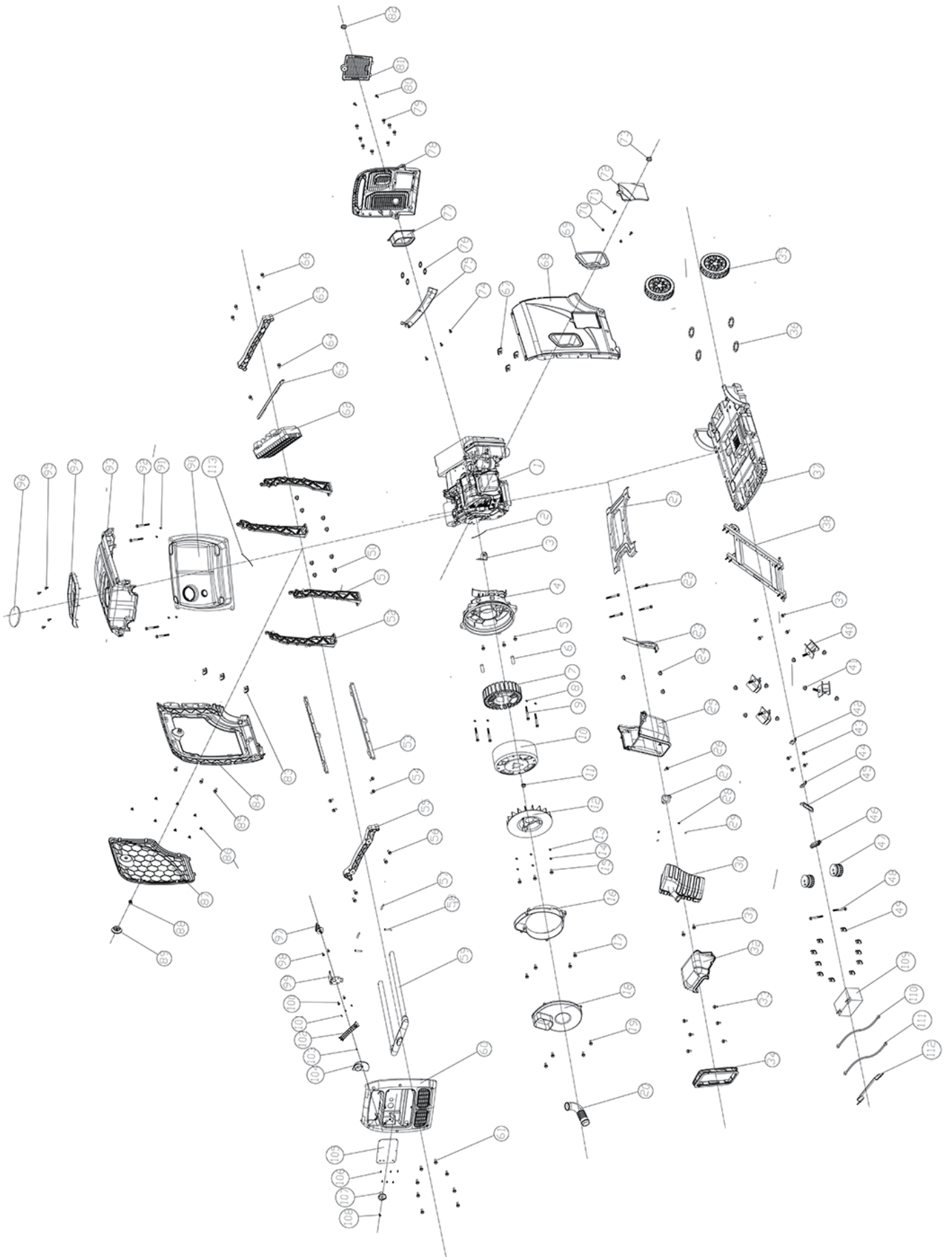


# EXPLODED VIEW & PARTS LIST



## EXPLODED VIEW & PARTS LIST

Part NO.	Description	Qty.	Part NO.	Description	Qty.
1	Engine	1	30	Invertor components	1
2	Seal, rubber strip	1	31	Flange bolt	2
3	Wiring ground	1	32	Muffler front cover	1
4	Alternator cover	1	33	Flange bolt	6
5	Flange bolt	4	34	Air outlet cover	1
6	Locating pin	2	35	Wheel assy	2
7	Stator assy	1	36	Circlip for shaft	4
8	Spring washer	4	37	Assembling bottom plate	1
9	Bolt	4	38	Bottom plate support	1
10	Rotor assy	1	39	Flange bolt	4
11	Flange nut	1	40	Shock absorb amount	4
12	Fan	1	41	Flange nut	8
13	Flat washer	4	42	Fixed plate	1
14	Spring washer	4	43	Flange bolt	4
15	Flange bolt	4	44	Fixed plate	1
16	Alternator wind scope	1	45	Oil tank mouth plastic set	1
17	Flange bolt	4	46	Sealant set	1
18	Alternator end cover	1	47	Shock absorb foot pad	2
19	Flange bolt	4	48	Flange bolt	2
20	Air inlet pipe	1	49	Clip nut	10
21	Engine support plate	1	50	Flange bolt	8
22	Flange bolt	4	51	Support	2
23	support plate	1	52	Support	2
24	Flange nut	3	53	Beam of fuel tank	2
25	Muffler exhaust cover	1	54	Flange bolt	4
26	Flange bolt	1	55	Handle assembly plate	1
27	Muffler washer	2	56	Flange bolt	4
28	Spring washer	2	57	Lock pin	2
29	Flange nut	2	58	Plug in pin	2

## EXPLODED VIEW & PARTS LIST

Part NO.	Description	Qty.		Part NO.	Description	Qty.
59	Telescope handle assy	1		88	Spring	1
60	Air inlet cover	1		89	Knob	1
61	Flange bolt	6		90	Fuel tank assy	1
62	Inverter	1		91	Washer	4
63	Inverter fixed support	1		92	Flange bolt	4
64	Flange bolt	2		93	Top cover	1
65	Handle assembly plate	1		94	Fuel tank plastic cover	1
66	Flange bolt	3		95	Cross-type screw	4
67	Clip nut	3		96	Oil level transparent block	1
68	Housing on the right	1		97	Fuel switch	1
69	Handle baffle	1		98	Flange bolt	2
70	Flange nut	2		99	Fixed plate	1
71	Flange bolt	2		100	Flange bolt	2
72	Oil window cap	1		101	Tapping screw	3
73	Knob	1		102	Handle	1
74	Tapping screw	3		103	Tapping screw	1
75	Handle end cover	1		104	Air inlet back cover	1
76	Teel retailer for holes	4		105	Cross-type screw	1
77	Alternator plastic cover	1		106	Cross-type screw	6
78	Air outlet cover	1		107	Fuel switch knob	1
79	Flange bolt	6		108	Cross-type screw	1
80	Cross-type screw	2		109	Battery	1
81	Battery protection plate	1		110	wiring	1
82	Knob bolt	1		111	wiring	1
83	Clip nut	3		112	Battery strap	1
84	Housing on the left	1		113	Fuel pipe	1
85	Flange bolt	3				
86	Spring clip	8				
87	Maintenance plastic cover	1				